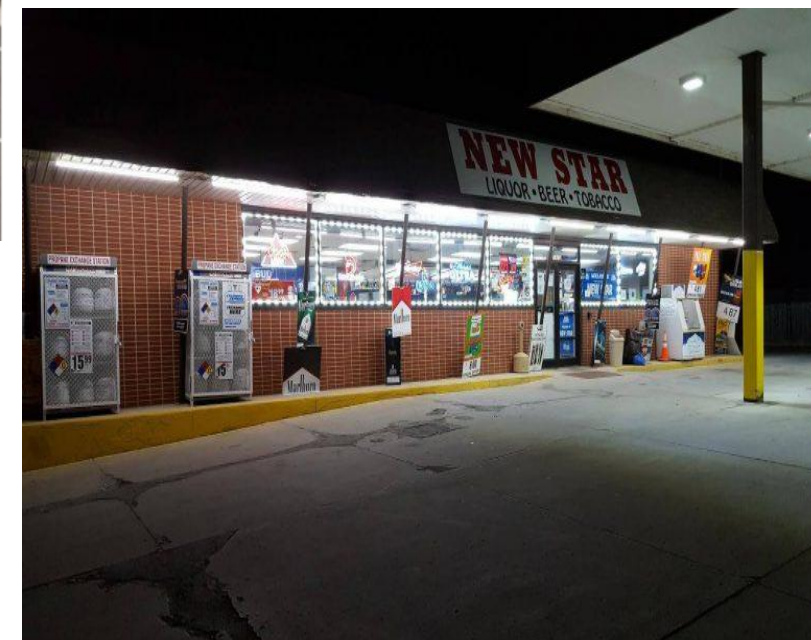




www.thecombinee.com



COMBINE GROUP



Mr. Azzi Bukhari
Chairman, Combine Group



CHAIRMAN'S MESSAGE

“Combine Group was founded with a clear purpose – to serve people through dependable, ethical, and community-centered services. What began as a focused initiative has grown into a diversified group operating across transportation, food, retail, and fuel services, addressing everyday needs with professionalism and care.

Through our two divisions, TA Combine and GA Combine, we now manage six operational and developing projects, each designed to deliver value, safety, and consistency. From Non-Emergency Medical Transportation, which supports healthcare accessibility, to our food, fuel, and retail businesses that serve local communities daily, every project reflects our commitment to responsible growth.

Our success is built on trust – trust earned through hard work, resilience, and an unwavering focus on quality. Challenges have strengthened our systems, sharpened our discipline, and reinforced our belief that sustainable businesses are built on integrity.

As Chairman, my responsibility is to ensure that Combine Group continues to expand thoughtfully, innovate responsibly, and operate with compassion. The future holds new services, new partnerships, and new milestones, but our foundation – safety, honesty, and excellence – will never change.”

Mr. Azzi Bukhari

Chairman, Combine Group

Combine Group

Combine Group was founded in 2020 with a clear objective: to build reliable, ethical, and community-oriented service businesses that address everyday needs with professionalism and care.

The Group operates from its Main Office at 2107 Highway 169 S, Fort Dodge, Iowa 50501, under the leadership of Mr. Azzi Bukhari (Chairman) and Mrs. Gloria Bukhari (Chief Executive Officer). Since its inception, Combine Group has steadily expanded its operations through two strategic divisions:

TA Combine Division - Focused on transportation, mobility, and service innovation, TA Combine supports healthcare access and patient-centered services.

GA Combine Division - Dedicated to food, fuel, and retail services, GA Combine delivers essential consumer services to local communities.

With strong leadership and hands-on management, Combine Group has evolved into a diversified organization built on regulatory compliance, operational discipline, and long-term sustainability.





Our Mission

To provide safe, reliable, efficient, and cost-effective services across all Combine Group divisions by leveraging strong leadership, trained professionals, modern systems, and continuous improvement – ensuring consistent value for customers, partners, and communities.



Our Vision

To establish Combine Group as one of Iowa's most respected and diversified service groups, recognized for integrity, innovation, operational excellence, and meaningful community impact across transportation, food, retail, and fuel sectors.

Our Objectives

Ethical & Responsible Operations: To conduct all business activities with honesty, transparency, and full regulatory compliance, ensuring protection of customers, partners, employees, and the environment.

Customer-Centered Service: To deliver high-quality services supported by efficient processes, modern solutions, and responsive customer care that consistently exceeds expectations.

Strategic Partnerships: To build and maintain long-term relationships with suppliers, vendors, and partners through collaboration, mutual respect, and shared value creation.

Workforce Development: To attract, retain, and develop skilled professionals by providing a fair, diverse, and growth-oriented work environment that encourages learning and career advancement.



KEY MILESTONES

- Foundation of Combine Group with a vision to deliver dependable and ethical services.
- Entry into transportation and community service operations.
- Launch of Non-Emergency Medical Transportation under TA Combine Division.
- Expansion into food and retail services under GA Combine Division.
- Establishment of fuel station and convenience retail operations.
- Operational consolidation, fleet expansion, and service quality upgrades.
- Portfolio strengthening with six active and developing projects, including the upcoming Limousine Service.

Our Team



Mr. Azzi Bukhari

Chairman

Provides strategic leadership, governance, and long-term vision for Combine Group, ensuring ethical growth and operational excellence.



Mrs. Gloria Bukhari

Chief Executive Officer

Oversees day-to-day operations, performance management, and execution across all divisions, ensuring service quality and organizational efficiency.



Our Values ...

Safety: Safety is our first priority and a moral obligation. We implement strict safety standards across all operations to protect customers, employees, and assets.

Integrity: We conduct business with honesty, transparency, and ethical discipline, honoring our commitments and treating all stakeholders with fairness and respect.

Teamwork: We believe strong results are achieved through collaboration among our teams, partners, vendors, and the communities we serve.

Professional Excellence: We maintain high standards of professionalism, service quality, and operational performance in every division and project.

Accountability: We take full ownership of our decisions and actions, measure results, and continuously improve to deliver on our promises.



OUR SERVICES

Combine Group delivers a wide range of essential and consumer-focused services through its divisions:

- Non-Emergency Medical Transportation services
- Upcoming Limousine Service initiative
- Food services and prepared food operations
- Liquor and tobacco retail services
- Fuel stations and convenience retail operations

Each service is designed with a focus on reliability, accessibility, safety, and customer satisfaction.

Non-Emergency Medical Transport

Non-Emergency Medical Transportation is a core project of Combine Group under its TA Combine Division, providing reliable, safe, and professional transportation services to public and private healthcare institutions, including hospitals, clinics, and healthcare centers.

The service operates with a fully owned and properly equipped fleet designed specifically for non-emergency medical transport. Our vehicles are maintained to high safety standards to ensure patient comfort, punctuality, and compliance with healthcare transportation regulations.

Our trained and experienced staff is capable of managing patient needs with care, professionalism, and sensitivity, ensuring a dignified transport experience. While focused on non-emergency services, our teams are prepared to respond calmly and effectively to unexpected situations.



Services Include

- Doctor's Appointments
- Therapy Appointments
- Oncology Treatments
- Dialysis Sessions
- Wound Care Visits
- Clinics & Hospitals Transfers
- Skilled Nursing Facilities
- Rehabilitation Centers
- Dental Appointments
- Adult Day Centers

This service plays a vital role in supporting healthcare accessibility and continuity of care within the communities we serve.



Limousine Service (Coming Soon)

Limousine Service is an upcoming initiative under the TA Combine Division, designed to expand Combine Group's service portfolio with innovation and efficiency. This project aims to introduce a modern, customer-centric service model that aligns with the group's values of reliability, quality, and trust. Limousine Service will be launched with a focus on operational excellence and long-term sustainability.



New Star Liquor & Tobacco Shop

New Star Liquor & Tobacco Shop is a flagship retail project of Combine Group operating under the GA Combine Division. The store is established to deliver a premium, responsible, and customer-focused retail experience through a comprehensive range of high-quality liquor and tobacco products.

The shop carries a complete portfolio of well-known, trusted, and trending local and imported brands, carefully selected to meet diverse customer preferences. In addition to regular inventory, New Star Liquor & Tobacco Shop also offers custom and on-demand stocking for valued customers, ensuring availability based on taste, demand, and seasonal trends.

Strategically located at an ideal and easily accessible location, the store provides a calm, organized, and welcoming shopping environment. Operations are managed by professional, trained, and committed staff who prioritize responsible retailing, regulatory compliance, and customer satisfaction at every level.



Key Features & Strengths

- Prime and easily accessible location
- Competitive and transparent pricing
- Professional, knowledgeable, and customer-oriented staff
- Wide range of top local and imported liquor brands
- Comprehensive selection of premium tobacco brands
- Custom and on-demand product availability
- Responsible retail practices with full regulatory compliance
- Peaceful, clean, and well-organized store environment
- On-call and online order facilitation (where permitted)
- Strong reputation for trust, reliability, and consistency

New Star Liquor & Tobacco Shop reflects Combine Group's commitment to quality retail standards, customer trust, and ethical business operations, serving the community with professionalism and reliability.



New Star Liquor & Tobacco Shop operates as a regulated retail business offering a broad selection of liquor and tobacco products. The store emphasizes responsible retailing, compliance with all licensing requirements, product quality, and customer service. It serves the local community with professionalism, consistency, and ethical business practices.



Otho Foods

Otho Foods is a customer-focused food venture under the GA Combine Division, offering freshly prepared pizza and fried chicken along with quality food products that meet everyday dining needs. The operation emphasizes hygiene, consistent taste, efficient service, and affordability.

Designed to serve families, workers, and travelers alike, Otho Foods follows strict food safety standards while maintaining a welcoming environment. The project reflects Combine Group's commitment to delivering dependable food services with quality, care, and customer satisfaction.

Otho Foods is a food-focused venture committed to delivering quality, consistency, and hygiene across its offerings. The project is designed to meet everyday consumer needs while maintaining freshness, affordability, and high operational standards. Customer satisfaction and food safety remain central to its operations.



Sinclair Gas Station

The Sinclair Gas Station provides reliable fuel services supported by operational efficiency, safety standards, and customer convenience. The station serves both local residents and travelers, reinforcing Combine Group's presence in essential daily services.



Convenience Gas Station

The Convenience Gas Station integrates fuel services with retail convenience offerings to meet the fast-paced demands of modern customers. Designed for accessibility, efficiency, and quality service, the project enhances customer experience while maintaining strict safety and operational controls.



WHY COMBINE GROUP

- Diversified operations under a unified and experienced leadership
- Strong compliance, safety, and quality-driven culture
- Customer-focused service delivery across essential sectors
- Community-oriented mindset with long-term commitment
- Sustainable growth strategy supported by operational discipline





COMBINE
GROUP

E-Mail: info@thecombinee.com

Web: www.thecombinee.com



CONTACT US

Main Office: 2107 Highway 169 S

Fortdodge Iowa 50501

Phone: +15153020310